



ELECTRICAL AND DATA CABLE INSTALLATION

for

Washington Metropolitan Area Transit Authority

Contract Number FQ17021

VOLUME 4

**Mezzanine Inspection Reports
Part 1b
Green and Yellow Lines**

November 13, 2016

Final Submission

WASHINGTON METROPOLITAN AREA TRANSIT AUTHORITY

**VOLUME 4
MEZZANINE INSPECTION REPORTS
PART 1B
GREEN & YELLOW LINES
TABLE OF CONTENTS**

PAGE NO.

1	MIR_C09_CRYSTAL CITY_MZ045	3
2	MIR_C10_REAGAN NATIONAL AIRPORT (SOUTH MEZZ)_MZ046	9
3	MIR_C10_REAGAN NATIONAL AIRPORT (NORTH MEZZ)_MZ093	13
4	MIR_C10_REAGAN NATIONAL AIRPORT (MINI MEZZ)_MZ093M	
5	MIR_C12_BRADDOCK ROAD_MZ047	18
6	MIR_C13_KING STREET-OLD TOWN_MZ048	26
7	MIR_C13_KING STREET-OLD TOWN (NEW ENTRANCE)_MZ048M	
8	MIR_C13_KING STREET-OLD TOWN (NORTH MEZZ)_MZ112	38
9	MIR_C15_HUNTINGTON (NORTH MEZZANINE)_MZ050	44
10	MIR_C15_HUNTINGTON (SOUTH MEZZANINE)_MZ051	51
11	MIR_E01_MOUNT VERNON SQUARE_MZ070	55
12	MIR_E02_SHAW-HOWARD U (SOUTH MEZZANINE)_MZ071	63
13	MIR_E02_SHAW-HOWARD U (NORTH MEZZANINE)_MZ072	72
14	MIR_E03_U STREET (EAST MEZZANINE)_MZ073	81
15	MIR_E03_U STREET (WEST MEZZANINE))_MZ074	86
16	MIR_E05_GEORGIA AVENUE_MZ076	95
17	MIR_E07_WEST HYATTSVILLE_MZ077	102
18	MIR_E08_PRINCE GEORGE'S PLAZA_MZ078	108
19	MIR_E09_COLLEGE PARK_MZ079	115
20	MIR_E10_GREENBELT_MZ080	121
21	MIR_F02_ARCHIVES_MZ081	128
22	MIR_F03_L'ENFANT PLAZA (NORTH MEZZANINE)_MZ082	136
23	MIR_F04_WATERFRONT_MZ083	143
24	MIR_F05_NAVY YARD-BALLPARK (WEST MEZZANINE)_MZ105	150
25	MIR_F06_ANACOSTIA (NORTH MEZZANINE)_MZ085	155
26	MIR_F06_ANACOSTIA (SOUTH MEZZANINE)_MZ106	161
27	MIR_F07_CONGRESS HEIGHTS_MZ086	168
28	MIR_F08_SOUTHERN AVENUE_MZ107	175
29	MIR_F09_NAYLOR ROAD_MZ087	180
30	MIR_F11_BRANCH AVENUE_MZ089	186

Mezzanine Inspection Report (Scoping)

Date: 11/12/2014	Station Name: C09 Crystal City	Mezzanine #: 045	Completed By: Dion Small
-------------------------	---------------------------------------	-------------------------	---------------------------------

Summary

All scoping for upper and lower communication ducts in the faregate arrays was completed. Upper power duct faregate array was completely scoped, but the lower power duct faregate array was only partially scoped due to heavy dust and debris allowing approximately 20' of the 30' run to be scoped. Pull string was installed in upper and lower communication duct faregate arrays and in the power conduit run from the kiosk to AFC panel.

Scanning is not required at this mezzanine.

Scoping of Faregate Array(s)

Task	6	Yes/No	Notes
Communications Duct – Upper Faregate Array (5 Gates)			
Was video scoping completed for the entire duct run?		Yes	Refer to WMATA Crystal City Upper 3inch Comm Duct Video.avi, WMATA Crystal City Upper 6inch Comm Duct Video.avi, and WMATA Crystal City Upper 6inch Comm Duct Video (2).avi files.
Were pull strings installed at all faregates in the array?		Yes	
Were there any obstructions or blockages? Provide details of type and specific location.		No	Heavy dust and debris
Is the duct at capacity? Provide additional details about the dimensions of ducts and number of wires.		No	1"x3" duct; 10-15 wires; 27' run with a 60-degree bend about 5' from kiosk.
Communications Duct - Lower Faregate Array (6 Gates)			
Was video scoping completed for the entire duct run?		Yes	Refer to WMATA Crystal City Lower 3inch Comm Duct Video.avi and WMATA Crystal City Lower 6inch Comm Duct Video.avi files.
Were pull strings installed at all faregates in the array?		Yes	
Were there any obstructions or blockages? Provide details of type and specific location.		No	Heavy dust and debris
Is the duct at capacity? Provide additional details about the dimensions of ducts and number of wires.		No	1"x6" duct; less than 10 wires; 30' run with a 60-degree bend about 5' from kiosk.
Power Duct - Upper Faregate Array (5 Gates)			
Was video scoping completed for the entire duct run?		Yes	Refer to WMATA Crystal City Upper 6inch Power Duct Video.avi file.
Were there any obstructions or blockages? Provide details of type and specific location.		No	Heavy dust and debris
Is the duct at capacity? Provide additional details about the dimensions of ducts and number of wires.		No	1"x6" duct; less than 10 wires; 27' run with a 60-degree bend about 5' from kiosk.
Power Duct - Lower Faregate Array (6 Gates)			
Was video scoping completed for the entire duct run?		No	20' scoped from a 30' run. Refer to WMATA Crystal City Lower 6inch Power Duct Video.avi file.
Were there any obstructions or blockages? Provide details of type and specific location.		Yes	Heavy dust and debris
Is the duct at capacity? Provide additional details about the dimensions of ducts and number of wires.		No	1"x6" duct; less than 10 wires; 30' run with a 60-degree bend about 5' from kiosk.

Scoping of Power Duct - Kiosk to AFC Panel		
Task	Yes/No	Notes
Kiosk to Cable Trough in room C206 (70' run)		
Was video scoping completed for the entire duct / conduit run?	N/A	Run is a 2" embedded conduit from kiosk to trough
Was pull string installed?	Yes	
Were there any obstructions or blockages? Provide details of type and specific location.	No	
Is the duct / conduit at capacity? Provide additional details about the dimensions of duct / conduit and number of wires.	No	2" conduit is empty
Cable Trough in room C206 to AFC Panel (60' run)		
Was video scoping completed for the entire duct / conduit run?	N/A	Run is a 2" conduit from trough to AFC Panel
Was pull string installed?	Yes	
Were there any obstructions or blockages? Provide details of type and specific location.	No	
Is the duct / conduit at capacity? Provide additional details about the dimensions of duct / conduit and number of wires.	No	2" conduit contains less than 10 wires
Observations / Issues / Next Steps		
Walker ducts contain a lot of dirt and debris; which affected the quality of the video-scope recording. Ducts should be cleaned to reduce any risk of complication of cable installation.		
Total power conduit run between Kiosk and AFC Panel is approximately 130'.		
Sign Off		
	GFP Representative	WMATA PRGM
Name:	Dion Small	
Signature:	<i>Dion Small</i>	
Date:	11/13/14	

Photo #1 – C09 Crystal City: Power run from kiosk

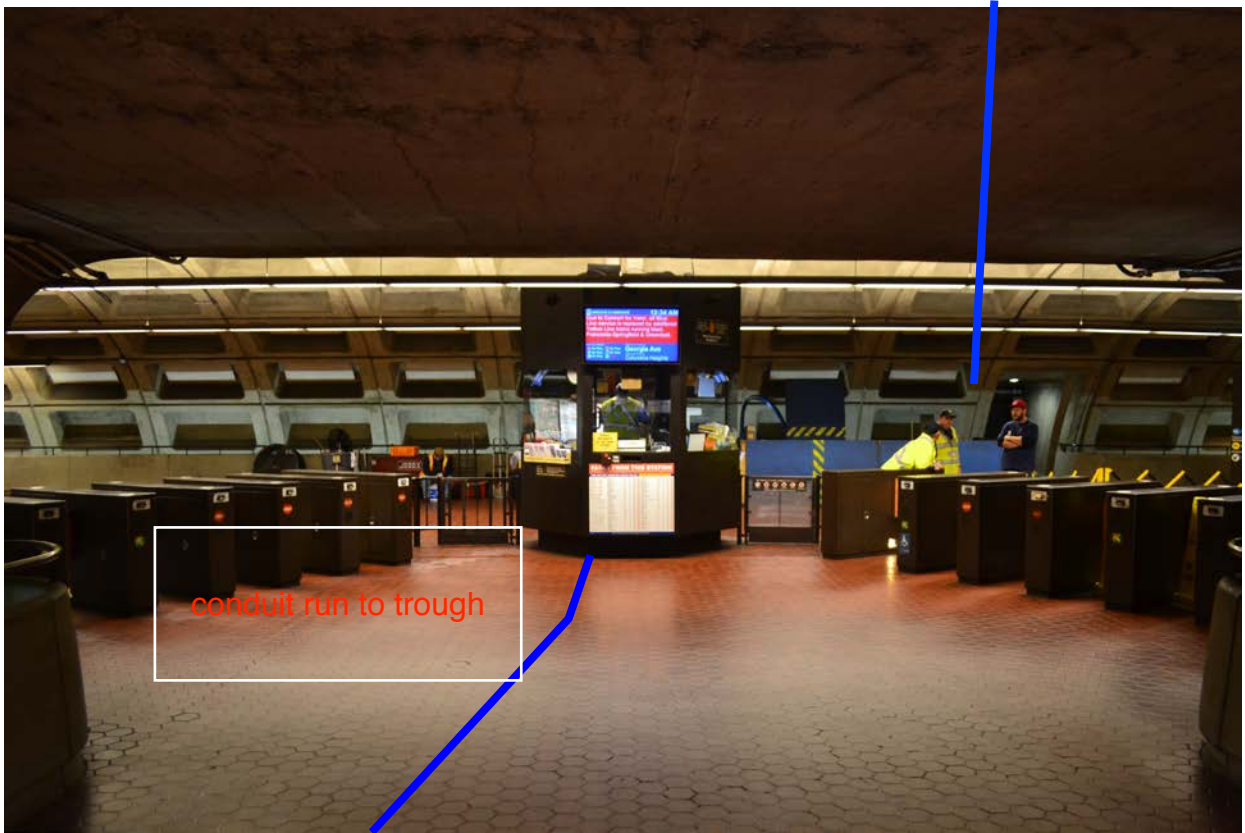


Photo #2 – C09 Crystal City: Power run from kiosk into trough box in room C206



Photo #3 – C09 Crystal City: Trough box in room C206

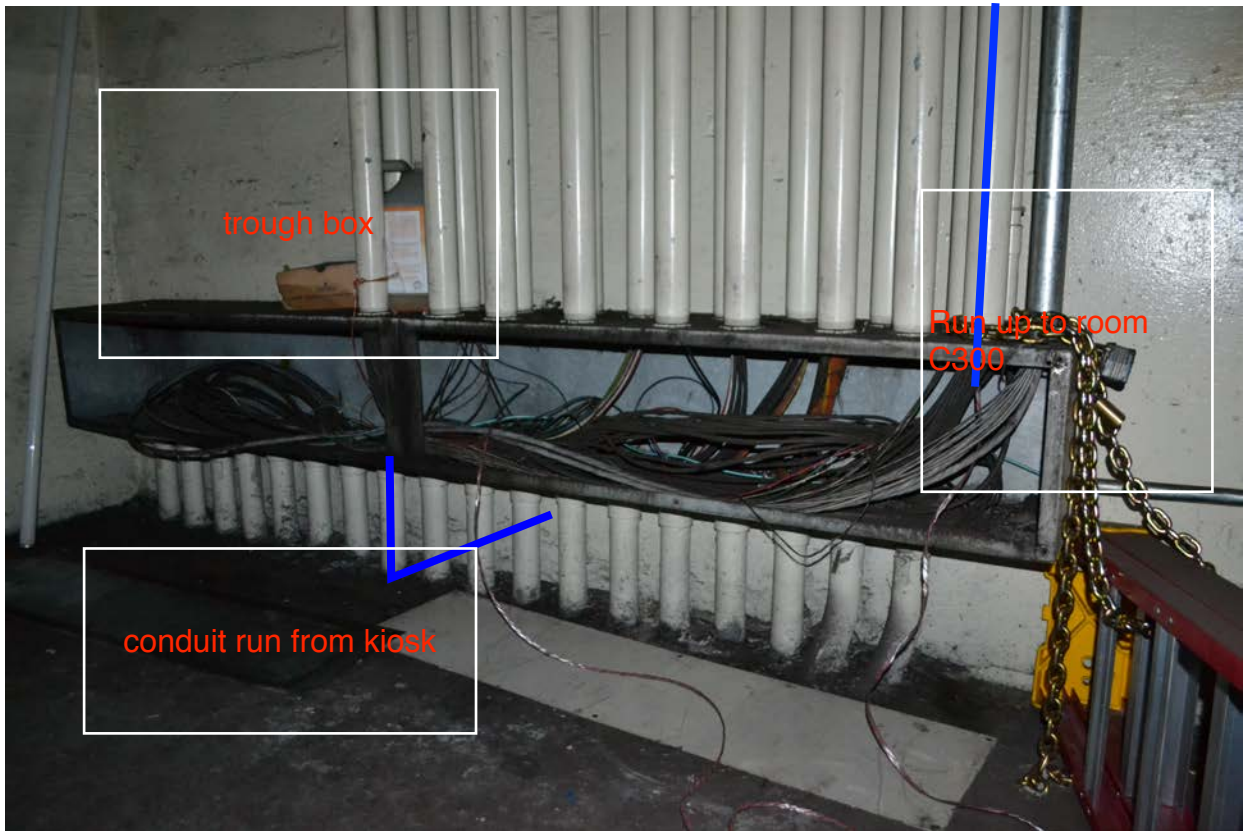
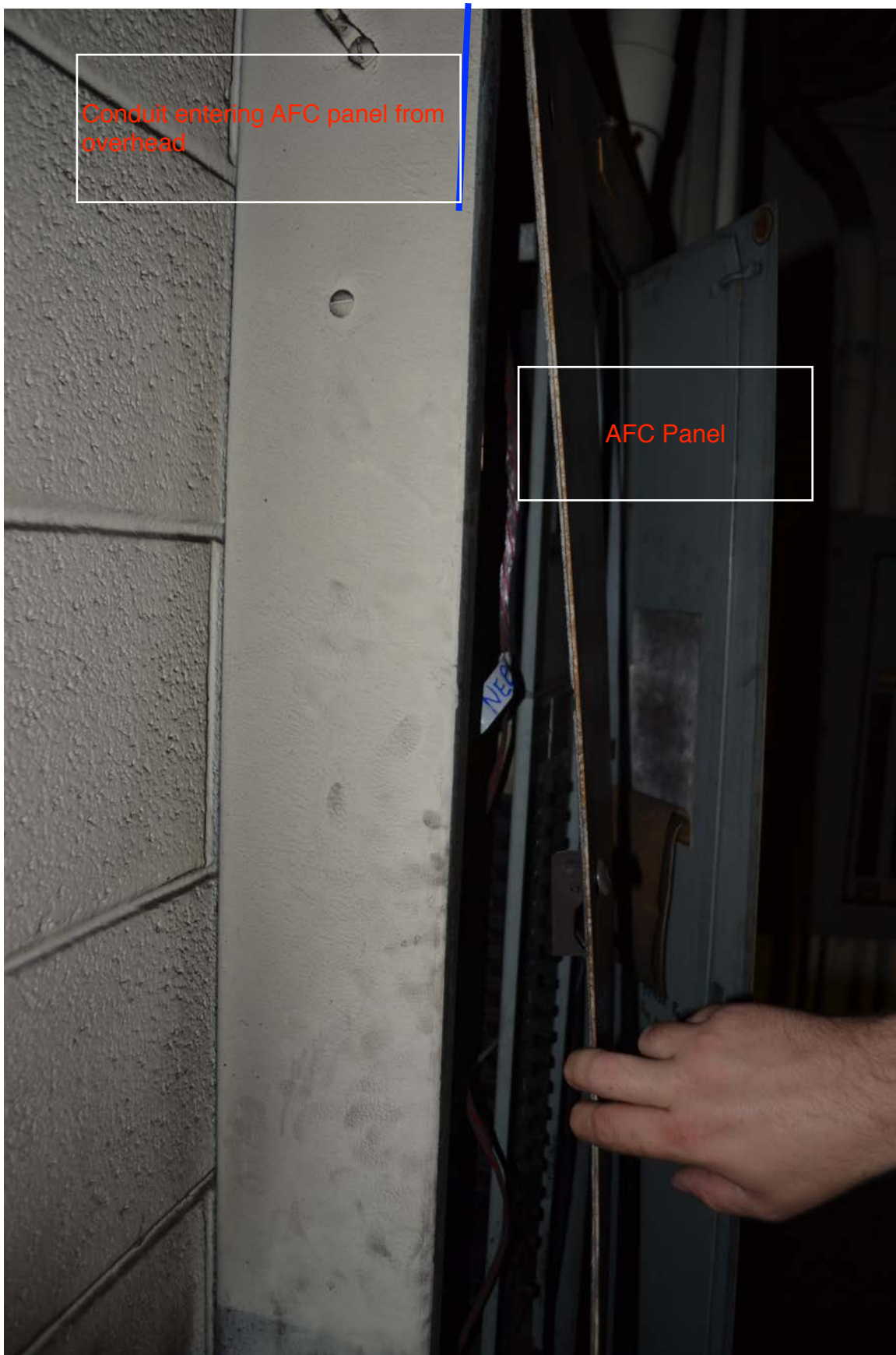
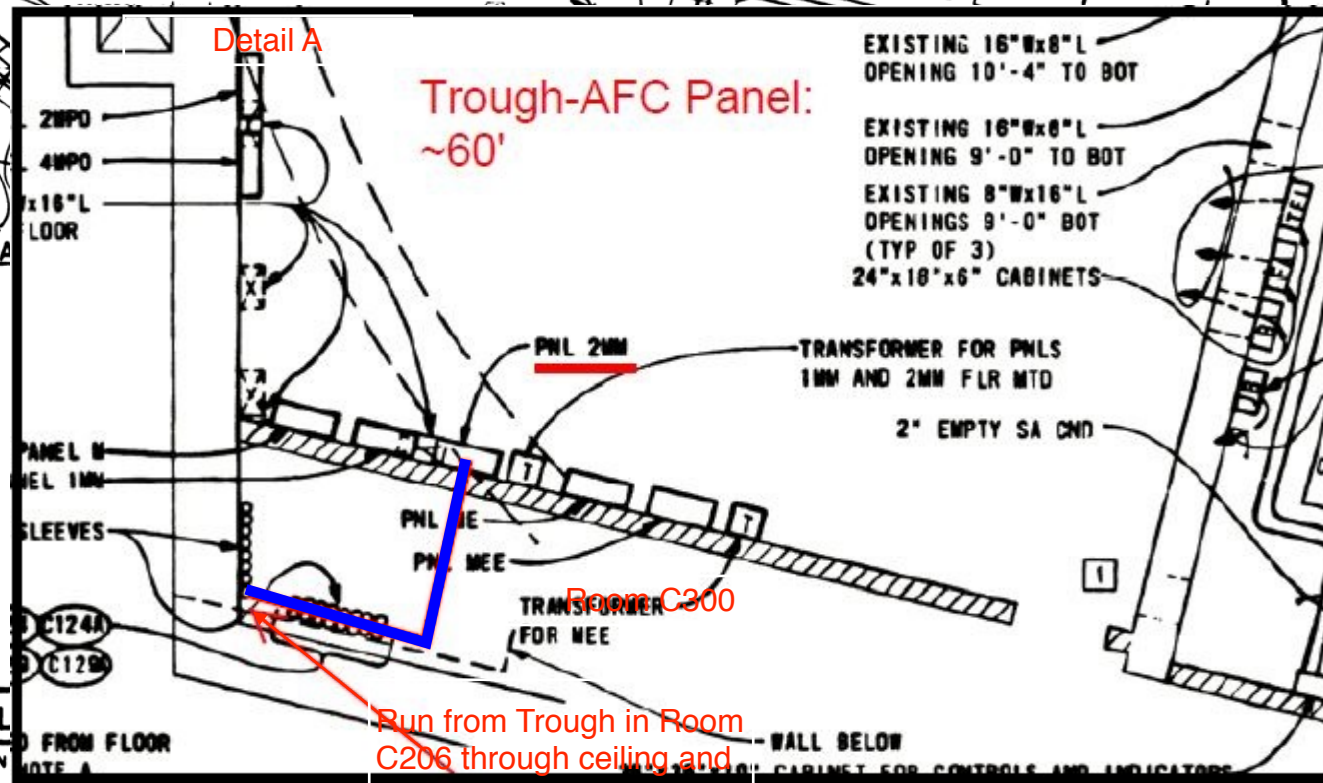
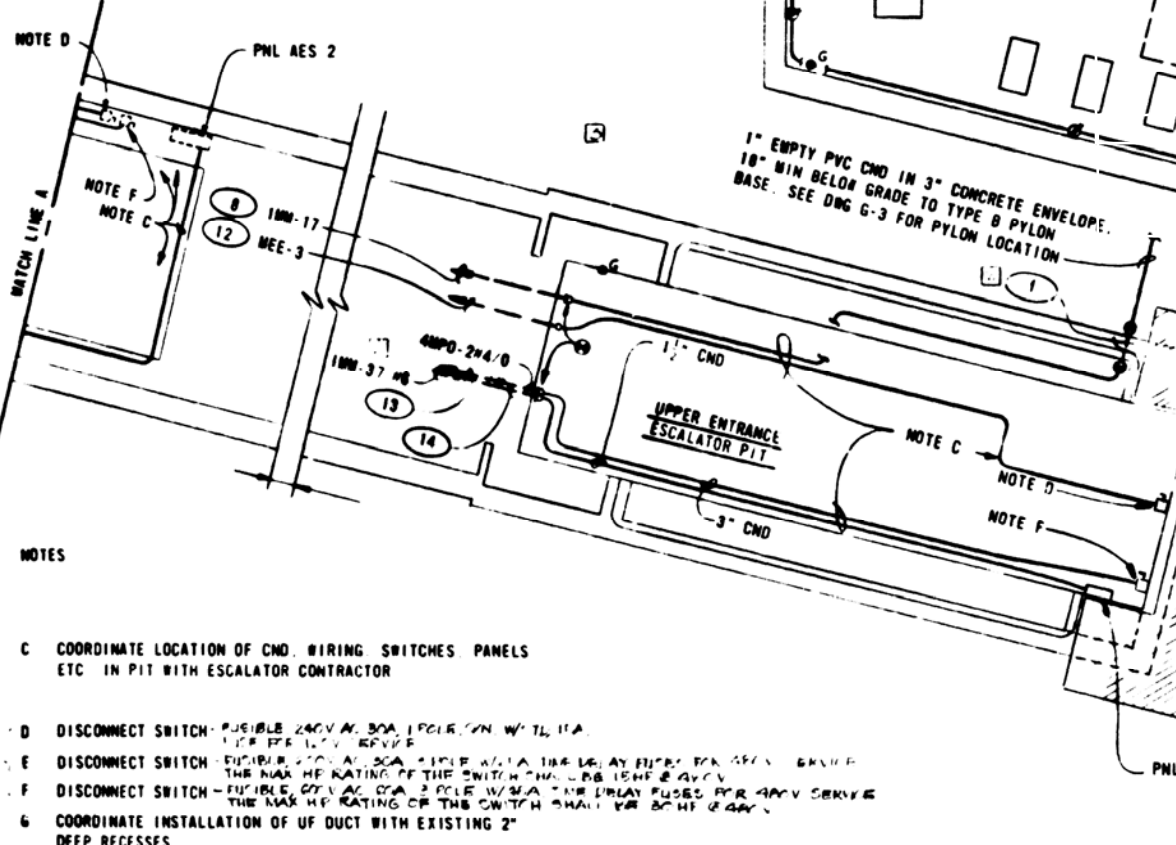
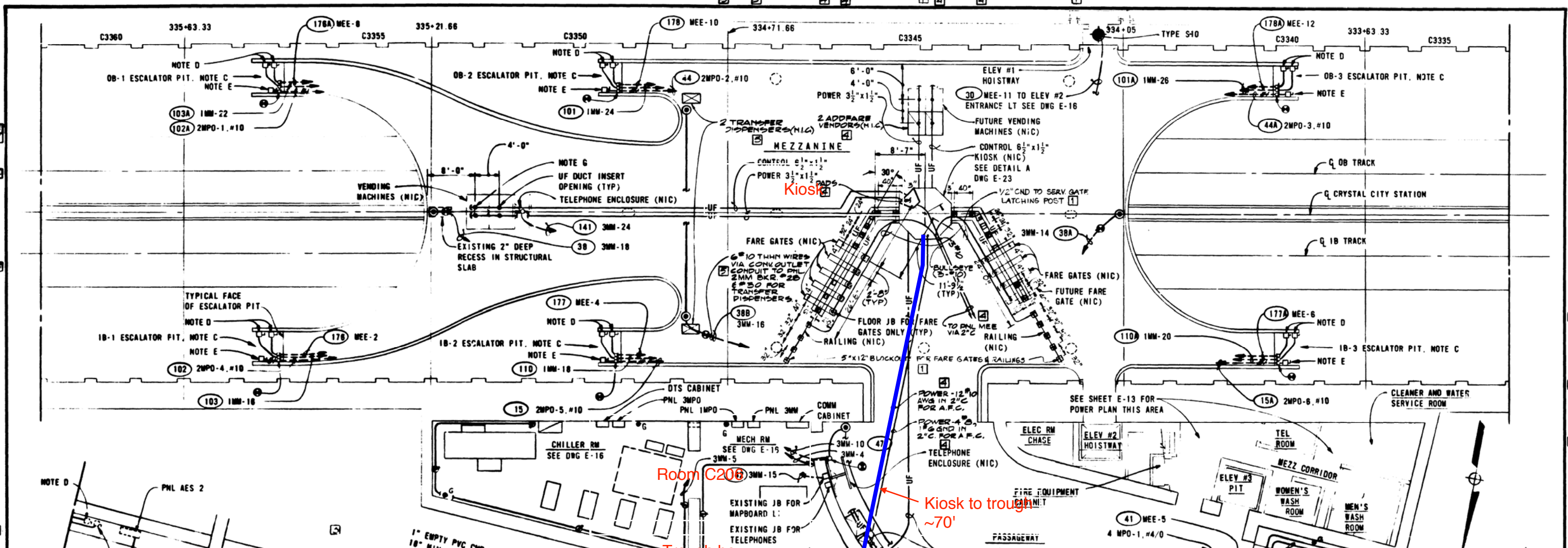


Photo #4 – C09 Crystal City: Conduit in room C300



Photo #5 – C09 Crystal City: Run to AFC Panel





- NOTES**
- C COORDINATE LOCATION OF CND, WIRING SWITCHES, PANELS, ETC. IN PIT WITH ESCALATOR CONTRACTOR.
 - D DISCONNECT SWITCH - FUSIBLE 240V AC, 30A, 1 POLE, ON WITH 1/4" TRIP FOR 1/2" TRIP.
 - E DISCONNECT SWITCH - FUSIBLE 240V AC, 30A, 1 POLE, ON WITH 1/4" TRIP FOR 1/2" TRIP. THE MAX. HEATING OF THE SWITCH SHALL BE 15HF @ 240V.
 - F DISCONNECT SWITCH - FUSIBLE 240V AC, 30A, 1 POLE, ON WITH 1/4" TRIP FOR 1/2" TRIP. THE MAX. HEATING OF THE SWITCH SHALL BE 15HF @ 240V.
 - G COORDINATE INSTALLATION OF UF DUCT WITH EXISTING 2" DEEP RECESSES.

DESIGNED	DRAWN	CHECKED	APPROVED	REFERENCE DRAWINGS		REVISIONS	
				NUMBER	DESCRIPTION	DATE	BY
				1-13	PART PLAN ENT & SERVICE AREA		
				1-16	PART PLAN ENT & SERVICE AREA		
				1-23	DETAIL A		
				E-19	SWBD SCHEDULE & CONTROL WIRING		
				1-3	ENTRANCE AREA SITE PLAN		
				E-34	ELEVATOR DETAILS		

WASHINGTON METROPOLITAN

HAYES, SEAY, MATTERN & MATTERN
ARCHITECTS - ENGINEERS

SECTION DESIGNER

SUBMITTED *A. B. Dickerson*

HARRY WEESE & ASSOCIATES
GENERAL ARCHITECTURAL CONSULTANT

APPROVED *J. C. ...*

STATION MEZZANINE & ENTRANCE

SCALE: 1/8" = 1'-0"

DRAWING NO. **FC 80-E-7**

M77-77

Mezzanine Inspection Report (Scoping)

Date: 11/12/2014	Station Name: C10 Reagan Airport South	Mezzanine #: 046	Completed By: Balkis Hassane
------------------	--	------------------	------------------------------

Summary

Video scoping was successfully completed in communication and power ducts for upper and lower faregate arrays. Pull string was successfully installed in communication ducts for upper and lower faregate arrays. Pull string was successfully installed in conduit run from kiosk to AFC panel.

No scanning required at this mezzanine.

Scoping of Faregate Array(s)

Task	Yes/No	Notes
Communications Duct – Upper Faregate Array (4 Gates)		
Was video scoping completed for the entire duct run?	Yes	Refer to WMATA Reagan Airport C10 Upper Comm Video.avi file.
Were pull strings installed at all faregates in the array?	Yes	
Were there any obstructions or blockages? Provide details of type and specific location.	No	
Is the duct at capacity? Provide additional details about the dimensions of ducts and number of wires.	No	3" and 6" ducts – less than 5 wires
Communications Duct - Lower Faregate Array (5 Gates)		
Was video scoping completed for the entire duct run?	Yes	Refer to WMATA Reagan Airport C10 Lower Comm Video.avi file.
Were pull strings installed at all faregates in the array?	Yes	
Were there any obstructions or blockages? Provide details of type and specific location.	No	
Is the duct at capacity? Provide additional details about the dimensions of ducts and number of wires.	No	3" and 6" ducts – less than 10 wires
Power Duct - Upper Faregate Array (4 Gates)		
Was video scoping completed for the entire duct run?	Yes	Refer to WMATA Reagan Airport C10 Upper Power Video.avi file.
Were there any obstructions or blockages? Provide details of type and specific location.	No	
Is the duct at capacity? Provide additional details about the dimensions of ducts and number of wires.	No	3" and 6" ducts – less than 10 wires
Power Duct - Lower Faregate Array (5 Gates)		
Was video scoping completed for the entire duct run?	Yes	Refer to WMATA Reagan Airport C10 Lower Power Video.avi file.
Were there any obstructions or blockages? Provide details of type and specific location.	No	
Is the duct at capacity? Provide additional details about the dimensions of ducts and number of wires.	No	3" and 6" ducts – less than 10 wires

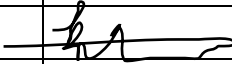
Scoping of Power Duct - Kiosk to AFC Panel		
Task	Yes/No	Notes
Kiosk to AFC Panel (120' run)		
Was video scoping completed for the entire duct / conduit run?	No	Conduit – no scoping required
Was pull string installed?	Yes	
Were there any obstructions or blockages? Provide details of type and specific location.	No	
Is the duct / conduit at capacity? Provide additional details about the dimensions of duct / conduit and number of wires.	No	2" conduit – less than 10 wires
Observations / Issues / Next Steps		
<p>A conduit passes through a 90 degree vertical bend at kiosk and is assumed to run along a straight path underground to connect with the AFC panel through another vertical 90 degree bend.</p> <p>No As-Built available for this mezzanine.</p> <p>Total conduit run from kiosk to AFC panel is 120'</p>		
Sign Off		
	GFP Representative	WMATA PRGM
Name:	Balkis Hassane	
Signature:		
Date:	11/12/2014	

Photo #1 – C10 Reagan Airport South: Existing conduit run from Kiosk towards AFC Panel





Conduit run from Kiosk